



A John Commercial Services, Inc. Company all rights reserved

Kristar™ Trench Drain Filter - Kristar.com

Trench Drain Filter is a stainless steel solid waste debris catch located over the trench drain outlet designed to stop and collect solid waste particulate prior to discharge. 50% of the length of the trench drain using a 2.5" Diameter or greater. Rubberizer™ Hydrocarbon Filter at 100% Media Fill. The Filter is located in front of the down grade to outlet allowing for free flow of Adsorbed hydrocarbon & phosphate waste water. When the filter becomes dark in color and hard; it is time to replace the filter. Normal Filter maintenance is every 6 months. Trench debris catch should be inspected monthly and cleaned as necessary and remove solid waste for best results.

Trench Drain Efficiency Test Data Information						
Model	Type	Opening Width "ID"	Minimum Depth*	Estimated Solid Capacity CUF*	Filtered Flow CUB Per Second*	Total ByPass Capacity CUF/Second*
TD3	Sock Tube	3.0"	6-7"	.15	1.0	.30
TD4	Sock Tube	4.0"	6-7"	.30	1.0	.50
TD5	Sock Tube	5.0"	6-7"	.40	1.0	.50
TD6	Sock Tube	6.0"	6-7"	.50	1.0	.50
TD7	Sock Tube	7.0"	6-7"	.60	1.0	.60
TD8	Sock Tube	8.0"	6-7"	.70	1.0	.70

Solid Waste Recovery Efficiency +80.0% (Removal of solid particulate @ greater than .05 or 1 millimeter in diameter)

Total Suspended Solids (TSS) capture ++80% w debris catch over outlet.

Filter Test Results Per 22" of Media @ 100% Fill Rate = +80% Oil/Grease HydroCarbons & 60% Total Phosphorus (TP)

Notes:

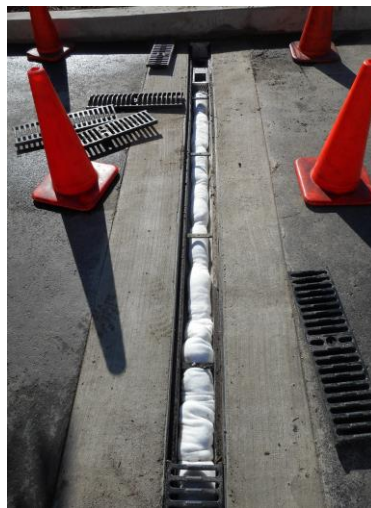
- 1) All flow thru test data completed by independent field test 1/31/2007 Filter Used: Rubberizer 2.5" inch diameter 3' LF Sock Tube 100% Fill Media.
- 2) Capacity Per 5' FT Cement Trench Drain 5'Lx5"Wx6"H
- 3) Final performance will vary based on trench drain type, design, grade, outlet, CFM, dimensions, solid waste type, maintenance, filter configuration. Results will vary by site installation.



A John Commercial Services, Inc. Company all rights reserved

### Kristar Trench Drain Filter Frame System with Trench Drain Filter

- No over engineered extra components that back up water drainage; no PVC pipes; no; no unnecessary geo fabric; no extra blockage that prevent water flow.
- Our system contains debris before outlet to stop heavy debris and allows for more filter media that stops hydrocarbon from entering stormwater drain systems.
- Extremely easy to maintain, low in cost and provides adequate drainage & by pass. Sizes available for common and not so common trench drain sizes.
- 100% Media Fill tubular filter socks for trench drains
- No expensive replacement parts
- Water flows over hydrocarbon filter 100% of time; not part of the time.
- Approved: Equal to OR better than alternative to more expensive alternatives.



**Recommended Filter Replacement every 6 months as necessary.**